

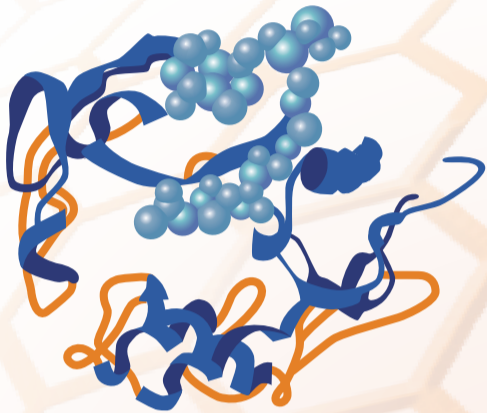
International Symposium

Various functions of Shati/Nat8l Brain, Pain and Metabolism

March 14 (TUE) 2017 9:00-12:15

Nichi-iko Auditorium University of Toyama
2630 Sugitani, Toyama-shi, Toyama 930-0194, Japan

Free entry, No appointments necessary



9:00 - 9:30

Shati/Nat8l is a key molecule in onset of addiction and psychiatric diseases

Atsumi Nitta

Graduate School of Medicine and Pharmaceutical Sciences, University of Toyama

9:30 -10:15

N-acetylaspartate metabolism outside the CNS

Juliane Bogner-Strauss

Institute of Biochemistry, Graz University of Technology, Austria

10:30 -11:00

Role of spinal Shati/Nat8l in neuropathic pain

Masahiro Ohsawa

Graduate School of Pharmaceutical Sciences, Nagoya City University

11:00 -11:45

N-acetylaspartate:from canavan disease to cancer

Aryan Namboodiri

Uniformd Services University of the Health Sciences, USA

11:45 -12:15

Physiological functions of a novel drug dependence-inhibitory molecule "Shati/Nat8l"

Toshitaka Nabeshima

Fujita Health University, Graduate School of Health Sciences

Host

Atsumi Nitta Ph.D.

Department of Pharmaceutical Therapy & Neuropharmacology,

Faculty of Pharmaceutical Sciences, Graduate School of Medicine and Pharmaceutical Sciences, University of Toyama.

Secretary of Office

Yoshiaki Miyamoto Ph.D.

Department of Pharmaceutical Therapy & Neuropharmacology, Faculty of Pharmaceutical Sciences, Graduate School of Medicine and Pharmaceutical Sciences, University of Toyama.

2630 Sugitani, Toyama 930-0194 JAPAN Tel / 076-415-8823, Fax / 076-415-8826 E-mail / miyamoto@pha.u-toyama.ac.jp

Sponsor

Toyama City, Takaoka City, Toyama Hospital Pharmaceutical Association, The Consortium of University